

COMPARATIVE BUDGET AT A GLANCE
 (AMOUNTS ROUNDED TO NEAREST BILLION)

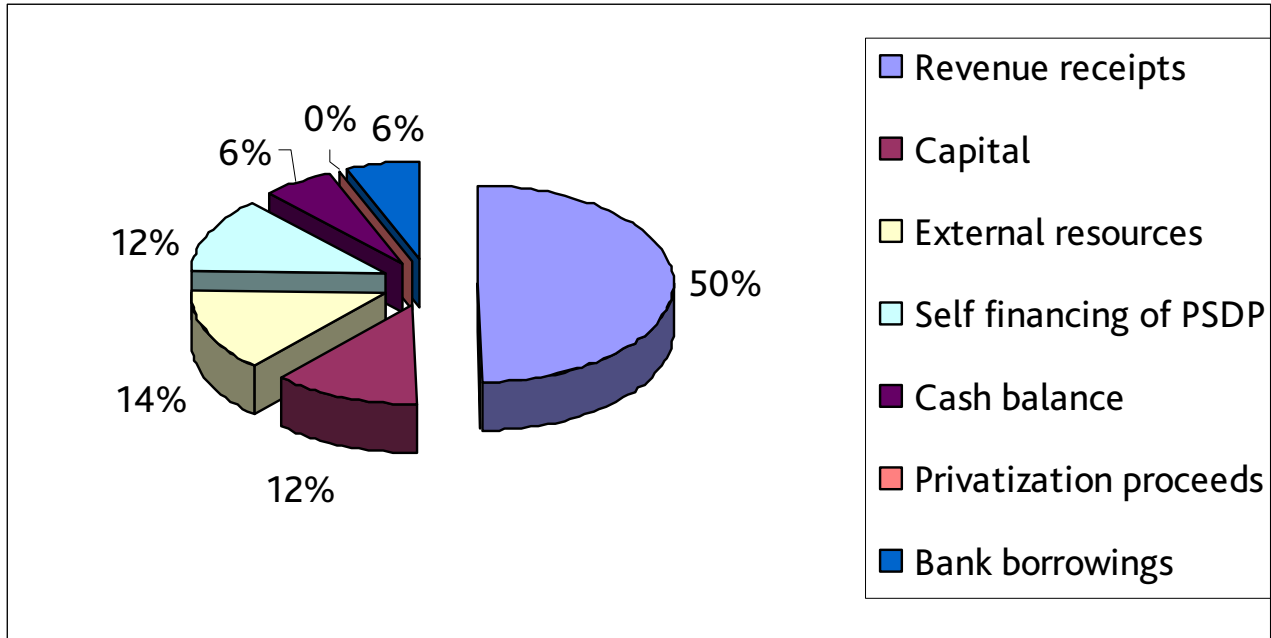
	2010-11		2009-10	
	Rs.	%	Rs.	%
Receipts				
Revenue Receipts				
Direct taxes	658	24	565	23
Indirect taxes	1,121	41	948	38
	<u>1,779</u>	<u>64</u>	<u>1,513</u>	<u>61</u>
Non-tax revenue	632	23	514	21
Gross revenue receipts	<u>2,411</u>	<u>87</u>	<u>2,027</u>	<u>82</u>
Less: Provincial share	<u>(1,034)</u>	<u>(37)</u>	<u>(655)</u>	<u>(26)</u>
Net revenue receipts	<u>1,377</u>	<u>50</u>	<u>1,372</u>	<u>55</u>
Capital receipts	325	12	191	8
External resources	387	14	510	21
Self financing of PSDP by Provinces	342	12	173	7
Cash balance	167	6	73	3
Privatization proceeds	-	-	19	1
Bank borrowings	167	6	145	6
Total Resources	<u>2,764</u>	<u>100</u>	<u>2,482</u>	<u>100</u>
Expenditure				
Current Expenditure				
Defence	442	16	343	14
General public services	1,388	50	1,189	48
Others	167	6	167	7
	<u>1,997</u>	<u>72</u>	<u>1,699</u>	<u>68</u>
Development expenditure	<u>767</u>	<u>28</u>	<u>783</u>	<u>32</u>
Total Expenditure	<u>2,764</u>	<u>100</u>	<u>2,482</u>	<u>100</u>

Note:

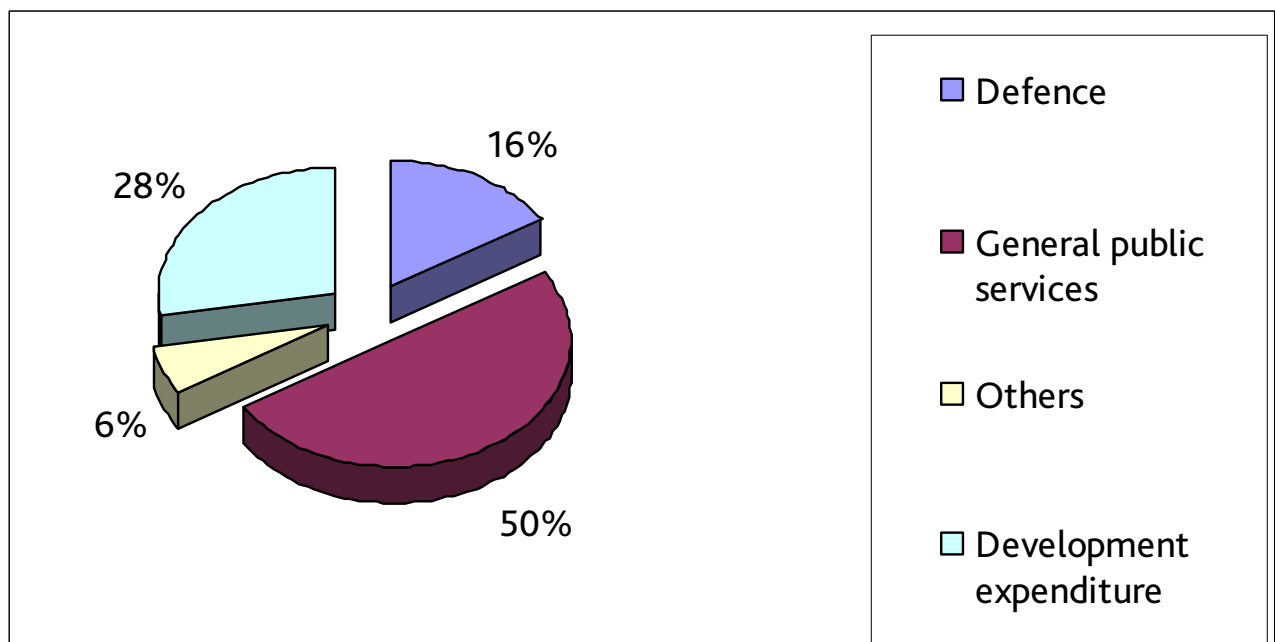
- i Figures have been obtained from amounts quoted in various articles and newspapers.
- ii General public services includes debt servicing, transfer payments and allowances.

COMPARATIVE BUDGET AT A GLANCE

Sources of Funds

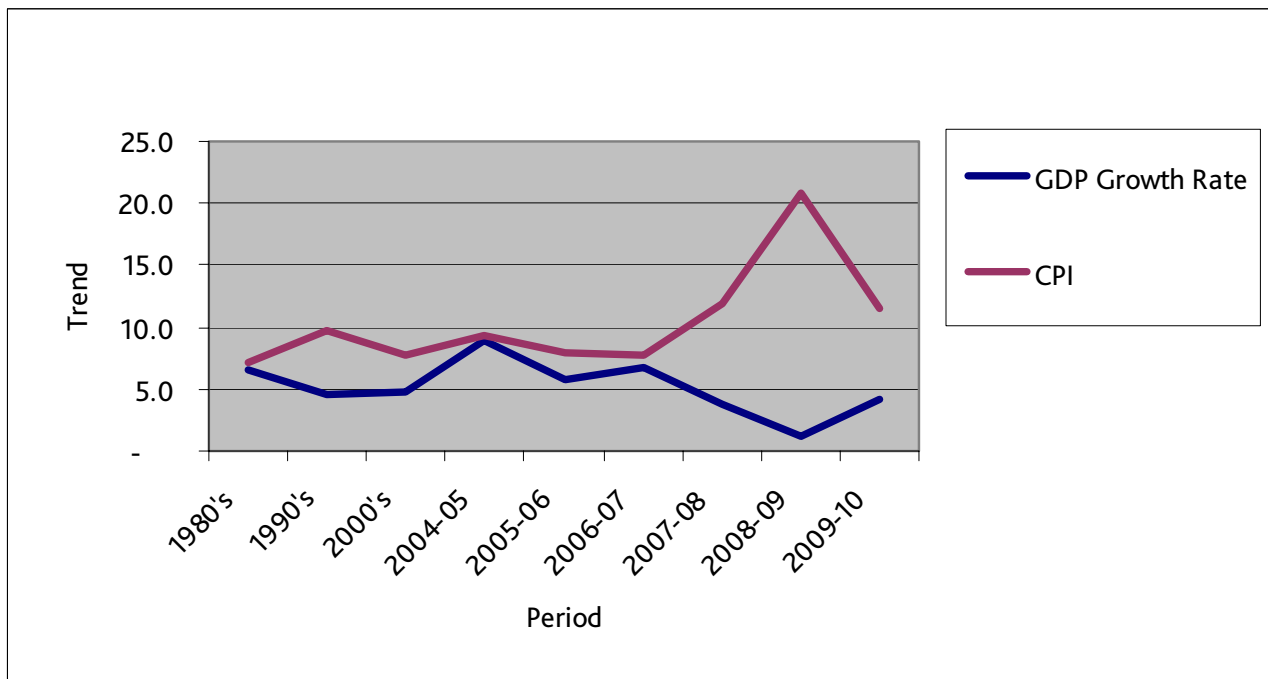
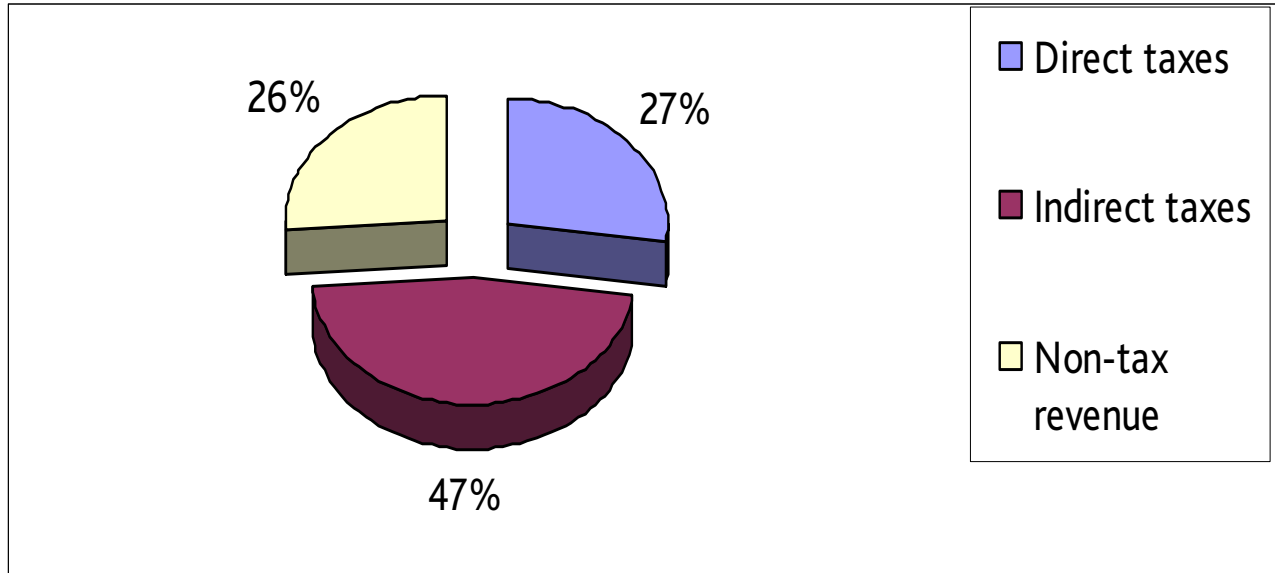


Utilisation Of Funds



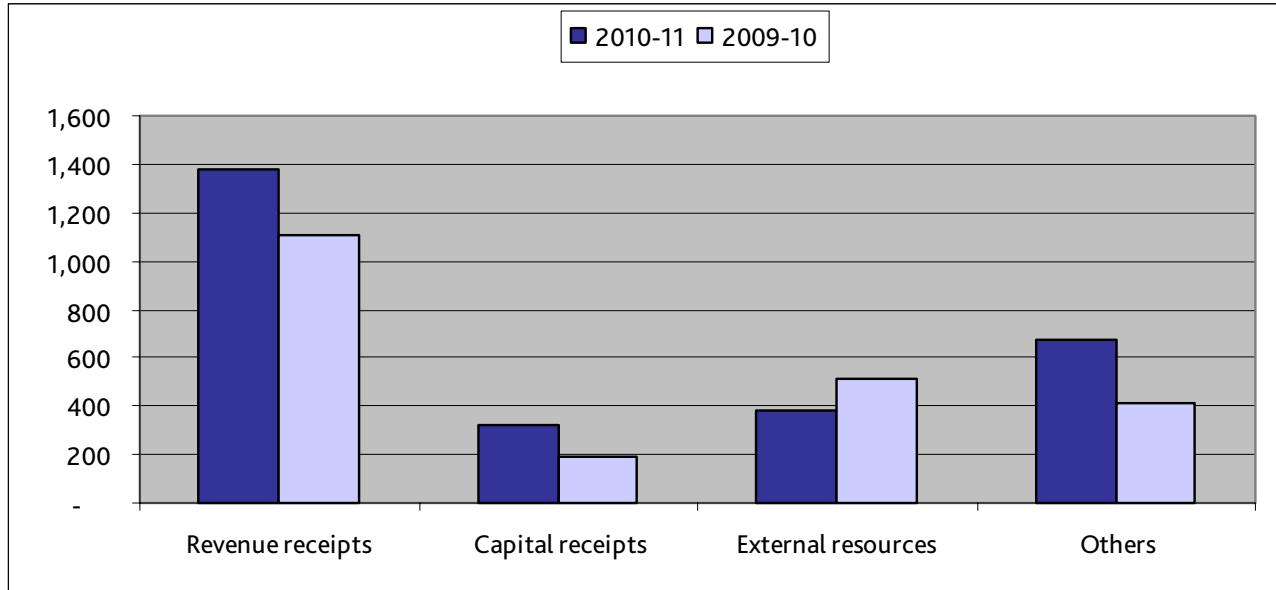
COMPARATIVE BUDGET AT A GLANCE

Breakup of Revenue Receipts

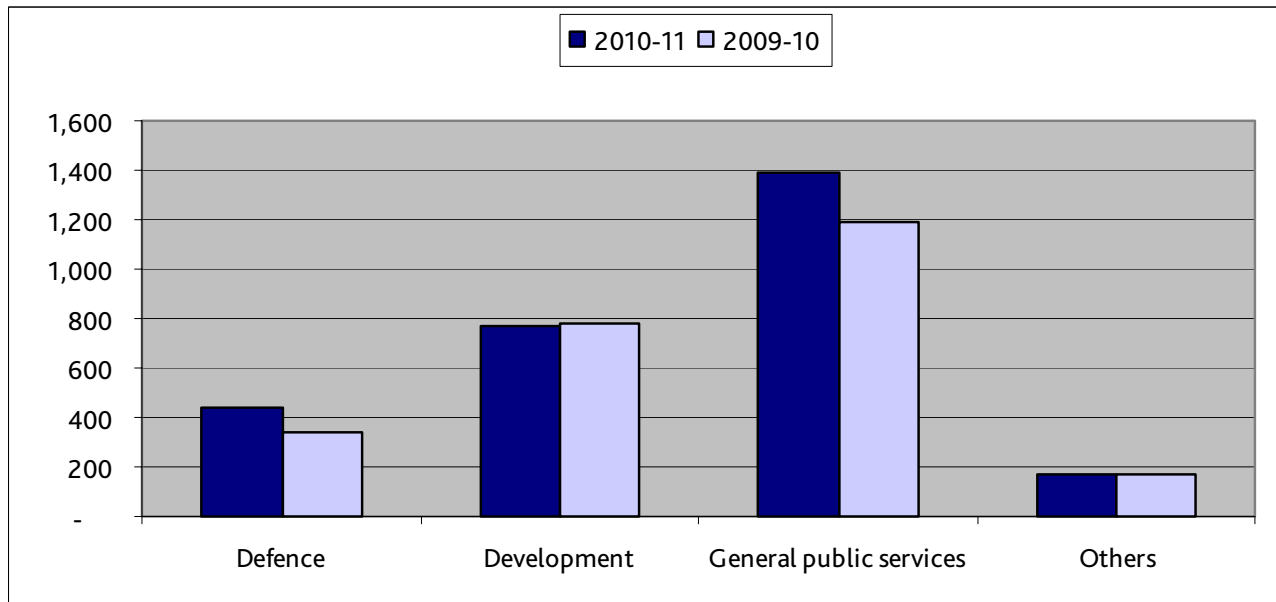


COMPARATIVE BUDGET AT A GLANCE

Comparison of Revenue

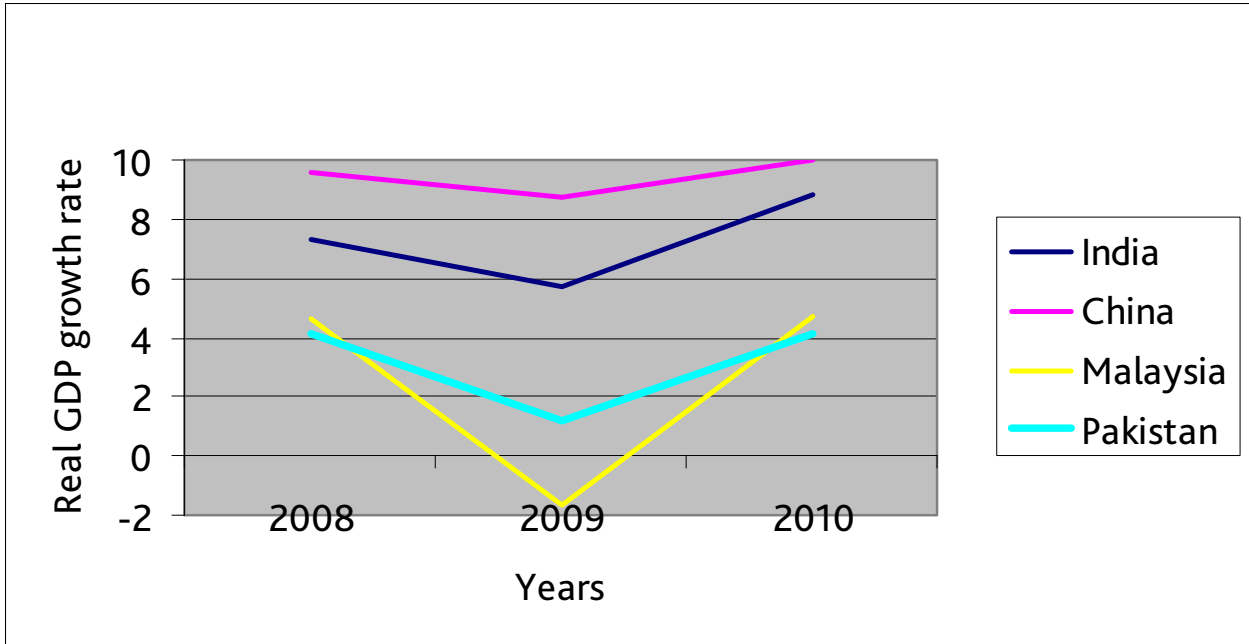


Comparison of Expenses



COMPARATIVE BUDGET AT A GLANCE

Comparative Real GDP Growth Rates



Growth Performance of Components of Gross Domestic Product

